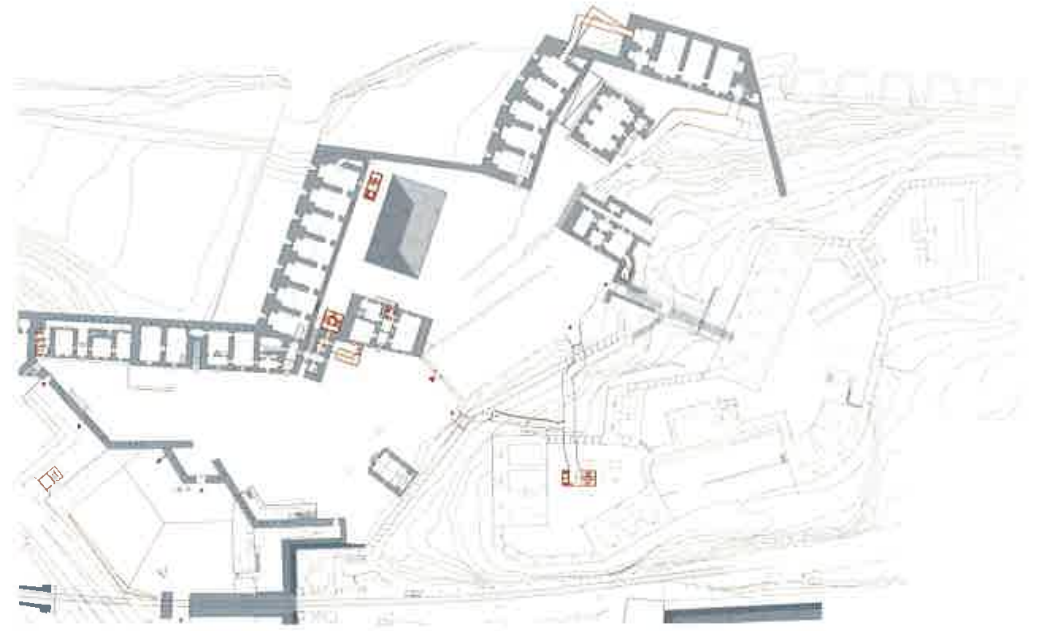


BOLZANO, ITALY **FRANZENSFESTE FORTIFICATION**

ARCHITECTS: ARCHITEKT MARKUS SCHERER WITH W. DIETL
ORIGINAL ARCHITECTS: FRANZ VON SCHEL, KARL V. MARTÓNY (1838)
COMPLETION: 2010 **GROSS FLOOR AREA:** 13,000 M² **TYPE OF CONCRETE:** PARTIALLY WATER-BLASTED PIGMENTED LOCAL CONCRETE
FUNCTION: WORK **PHOTOS:** RENÉ RILLER (276 B. L., B. R., 279), ALESSANDRA CHEMOLLO (277 A., B., 278)

This building was originally designed as a fortified defense complex but has never been used as such. Now used as a cultural facility, close attention was paid to the conservation of the building and its character. Two concrete towers serve as connecting elements between the buildings. The surfaces and materials reinterpret the historical construction: concrete has been used intermittently, with sections of sand between the concrete areas. An existing tunnel has been used to create a connection to the central fortification. Inside, a black reinforced concrete stairwell winds upwards, with a gold handrail that is intended to remind visitors of the gold stolen from the Banca d'Italia that was found here.



left: Lower fortification_Courtyard_View of entire complex. right: Entrance_Stairwell_Entrance detail.



CHRIS VAN UFFELEN

CONCRETE
CONCRETE
CONCRETE

PURE. STRONG. SURPRISING.

BRAUN

